

# Chapter News

Volume 13, Issue 1

Winter 2008

*Western Chapter New York Water Environment Association*

## Special 2008 dates of interest:

### February 3-6

- 80th Annual Meeting and Exhibition - New York, NY

### March 14

- Western Chapter Scholarship Applications due

### March 18

- Greater Buffalo Environmental Conference

### June 2-4

- NYWEA Spring Meeting - Lake George

### September 8

- Stockman-Pryce Golf Tournament

### October 18-22

- WEFTEC - Chicago, IL

For the most up-to-date listing, check our web site at [www.wnywea.org](http://www.wnywea.org)

## Message from the Chair

By Roberta Gaiek



First off, welcome back from what I hope was an enjoyable holiday break. We are already in the midst of a new year, and I hope everyone is ready to continue into 2008 energized and armed with new thoughts, ideas and initiatives. 2007 was a great year for the WNYWEA Chapter, and upcoming events in 2008 promise to carry through with the same momentum. As always, the Chapter continues to evolve, and we welcome back veteran members, as well as those who are joining us for the first time.

The Greater Buffalo Environmental Conference (GBEC) is scheduled for March 18 at the Hearthstone Manor in Depew. Look inside this newsletter for more information regarding the program and registration details.

During 2007, the

WNYWEA initiated a program for providing annual Western Chapter training, tours and social events. The meeting program includes seminars geared toward operators and sessions for engineers/management. Two to four events are scheduled annually per group. These seminars provide an avenue for training, continuing education and networking. Operator CEUS and Engineer PDHs are generally available for each scheduled meeting. Paul McGarvey is a key player in the introduction and ongoing development of this program. Please contact Paul or check out our web site ([NYWEA.org](http://NYWEA.org)) for further details on upcoming events.

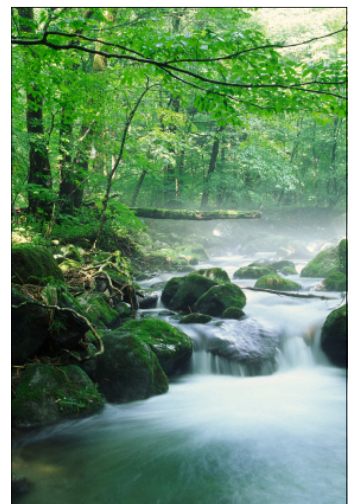
W N Y W E A has implemented a number of joint meetings with other agencies (AWMA and APWA) throughout this past year. This kind of collaboration is a positive step in setting up affiliations and communication with peers and colleagues. During the year ahead, WNYWEA will continue to foster these relationships and participate in these collaborative meetings. Please plan on attending. These are great opportunities for meeting new colleagues and sharing ideas.

The W N Y W E A

membership in 2007 has increased. We would like to continue this trend and also encourage all members to become more active, perhaps choosing to participate in just one more event this year than they did last year.

On another subject, it is with great sadness that we acknowledge the passing of Jane Ork, a WNYWEA Board Member and Vice-Chair of the Government Affairs Committee. Jane will be sorely missed from our community. A tribute to Ms. Ork begins on page 3.

Once again, remember that the Western Chapter Board is here for you. Please contact anyone of us if you have questions, ideas or need assistance in any way. I am looking forward to another great year serving as chair.



## Inside this issue:

Scholarship Winners	2
Avenue Toward Success	2
08-09 Western Chapter Board	3
2007 GBEC	3-
Tribute to Jane Ork	4
Congratulations Camie and Jeff	4
YP's Wrap-Up 2007	5
GBEC Agenda	6&7
Making Buffalo's Inner Harbor Revitalization Work Through Improved Water Quality	8&9
27th Annual Stockman Review	10
28th Annual Golf Announcement	11
GBEC Registration Form	11
2008 NYWEA Schedule	12
Call for Papers	12

## Western Chapter Announces 2007 Scholarship Winners

### By Robert Lannon



In January of each year, scholarship applications inviting high school seniors to apply are mailed to the guidance counselors of every high school located within the geographic boundaries of the Western Chapter.

Completed applications are due in March and typically number in the range of 25 to 45.

Students compete for first and second place scholarships of \$1,000 and \$500, respectively.

Awards are based on academic, extracurricular and community activities,

references, and personal goals. As an added benefit, the successful students are automatically enrolled in the New York Water Environment Association as a student member for a period of one year following award of the scholarship.

The \$1,000 winner for 2007 is Melissa Hartly from Royalton—Hartland High School in Middleport, NY.

Melissa is attending Susquehanna University majoring in Environmental Studies.

The \$500 winner for 2007 is Michael Moeller Jr.

from North Tonawanda High School in North Tonawanda, NY.

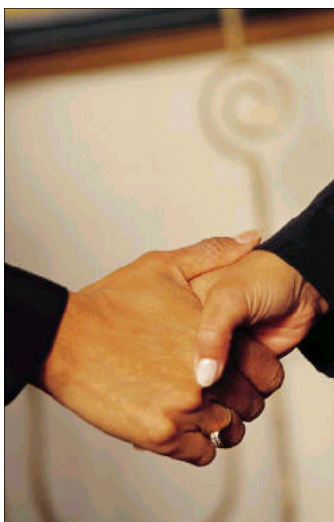
Michael is attending Clarkson University and is pursuing a dual major in Mechanical Engineering and Physics.

I would like to take this opportunity to sincerely thank the members of the scholarship committee who spent a significant amount of time reviewing the applications: Kirk Rowland, Bill Schutt, Frank Nerone, and Angelo Sarkees.

Congratulations once again to Melissa and Michael!

## Board of Directors Provides an Avenue Toward Success

### By Bryan Smith



The Western Chapter of the NY Water Environment Association encompasses all of Erie, Niagara, Wyoming, Genesee, Allegany, Cattaraugus, and Chautauqua counties. Leadership and management is vested in a Board of Directors, which conducts its affairs and establishes policies subject to the conditions and limitations prescribed in the Association's bylaws.

The Board of Directors is comprised of 15 members, each serving 3-year terms on a rotating basis. This provides some continuity of leadership and gives members an opportunity to serve on the Board. Each year, the Chairman appoints a Nominating Committee, and this committee makes every attempt to ensure there is at

least one active Board member from each county served.

Currently, Niagara County has three board seats; Erie County, 11; Chautauqua County one; Cattaraugus, Allegany, Genesee, and Wyoming counties have none. Demographically, seven members work as consultants, seven are plant operators or utility administrators, and one works with NYSDEC.

The Chapter has always attempted to properly serve its membership and, demographically, it has succeeded. Geographically, the Board continues to seek interested candidates from each of the currently-unrepresented counties. To view a list of the current Board, visit our Chapter web

site at [www.wnywea.org](http://www.wnywea.org), and click on the link to the Board of Directors. General Board meetings are held 10 months per year, and most Board members actively participate in various aspects of Chapter events and committees.

Those meetings and the individual's level of involvement vary greatly. However, regardless of the time spent, each Board member works toward the success of YOUR organization.

If you wish to become more active and perhaps run for the Board, please contact the Chapter Chair, Robbie Gaiek.

Her email is [robbie@sa.ci.buffalo.ny.us](mailto:robbie@sa.ci.buffalo.ny.us) or you may call her at 716-883-1820, Ext. 208.

## 2008-2009 Western Chapter Board of Directors

This past fall, you participated in the work to provide the membership with training suggestions from the membership, so we have included their work affiliation and daytime of Directors. These dedicated professionals NYWEA. They welcome comments and telephone numbers for your convenience.

<b>Roberta Gaiek</b> , Chair Buffalo Sewer Authority (716) 883-1820 x 208 Robbie@sa.ci.buffalo.ny.us	<b>Jeff Angiel</b> , Coordinator Town of Amherst (716) 631-4331 x 27 jangiel@amherst.ny.us	<b>Kenneth Maving</b> , Director Tonawanda, WWTP (716) 693-4900 kmasing@tonawanda.ny.us	<b>Angelo Sarkees</b> , Director NYSDEC (716) 851-7070 ajsarkee@gw.dec.state.ny.us
<b>John Camilleri</b> , Secretary/Treasurer Tonawanda WWTP (716) 693-4900 JSC@tonawanda.ny.us	<b>Richard Crist</b> , Director URS Corporation (716) 483-3384 dickcrist@juno.com	<b>Paul McGarvey</b> , Director Stearns and Wheler, LLC (716) 691-8503 pjmgarvey@stearnswheler.com	<b>William Schutt</b> , Director William Schutt Associates (716) 683-5961 wschutt@wschutt.com
<b>Bryan Smith</b> , State Board Rep. Conestoga-Rovers & Associates (716) 856-2142 bsmith@CRAworld.com	<b>Robert Lannon Jr.</b> , Director Conestoga-Rovers & Associates (716) 856-2142 rlannon@CRAworld.com	<b>Frank Nerone</b> , Director Niagara Co. SD #1 (716) 693-0001 frank.nerone@niagaracounty.com	<b>Thomas Whetham</b> , Director Erie Co. DEP (716) 858-8581 whetham@erie.gov
<b>John Amend</b> , Director Malcolm Pirnie, Inc. (716) 667-0900 jamend@pirnie.com	<b>Timothy Lockhart</b> , Director Town of Lewiston (716) 754-8291 lockhart13@msn.com	<b>J. Kirk Rowland</b> , Director Town of Tonawanda (716) 874-0490 krowland@tonawanda.ny.us	

*Nominations are made in the summer and elections are held in the fall. Don't miss your chance to get involved at the Board level.*

## 2007 Annual Greater Buffalo Environmental Conference Success

The 25<sup>th</sup> annual Greater Buffalo Environmental Conference was a big success! Attendance was up, and we received many positive comments regarding the event.

The program was excellent, with a variety of topics that appealed to all attendees. Keynote speaker Alexandra Dunn, general counsel to the National

Association of Clean Water Agencies, provided a national overview of upcoming legislation and regulatory policies.

We would like to extend a thank you to our exhibitors for their support of the event. Last year we were pleased to welcome the **following exhibitors**:



2007 GBEC Conference

Pertech	URS Corp.	Gehring Pumps, Inc.
AFTEK, Inc.	ARCADIS BBL	Pioneer Pump Systems, Inc.
YSI – SONTEK Instruments	Malcolm Pirnie, Inc.	Koester Associates, Inc.
IsleChem, LLC	Stearns and Wheler, LLC	Total Control System
TVGA Consultants	Conestoga-Rovers & Associates	Services, Inc.
O'Brien & Gere	Wendel Duchscherer	Godwin Pumps
Burgh and Schoenenberger Associates		

## Tributes to Jane Ork

By Roberta Gaeik and Bryan Smith



Jane Ork

Jane Ork, an active member of the environmental community and NYWEA during the past 20 years, passed away this past June. She will be greatly and sadly missed by all who had the privilege of knowing her.

Jane was an associate chemist at the Buffalo Sewer Authority (BSA), starting out as a bench chemist in the laboratory. For the last 10 years, she worked as a lead person in BSA's Process Control division. The main focus of her job was to ensure that BSA met all state and federal regulatory monitoring and reporting requirements under the State Pollutant Discharge Elimination System and Title V permits. The job was multi-faceted and included monitoring process control data, setting process goals,

working on WWTP improvement projects, escorting visitors on tours, and doing laboratory work. Jane truly enjoyed her job, and she worked with a passion that always inspired others around her to become involved.

Any of you who have attended the annual Greater Buffalo Environmental Conference (GBEC) during the past several years very likely met Jane - she managed the registration desk the morning of the event each year. Jane was also an active member of the GBEC Program Committee for many years, and became Chairman of the Committee in 2004, playing an integral part in maintaining the high quality of the event's presentation agenda each year.

In December of 2007, Jane was nominated and elected by her industry peers to serve on our local NYWEA Western Chapter Board of Directors. Jane also served as Vice-chair of the Government Affairs Committee at the NYWEA State level.

Jane was always ready to get involved, whether it was for an environmental or water related event, to cook food for a meeting, or to take the lead in organizing school events for her daughter. She represented the best of 'volunteerism' - always willing to help, quietly and very capably serving the needs and interests of those around her.

In Jane's memory, and as a tribute to her and all she did for all of us, the local Western Chapter Board and the Board of Directors of the Stockman Scholarship Committee have both voted unanimously to make substantial contributions to a dedicated college scholarship fund for Jane's daughter. More information and a presentation will be made at this year's Greater Buffalo Environmental Conference on March 18.

Jane, we thank you for giving us the chance to know you as a friend, co-worker and confidante — we will truly miss you....

### By Patricia Cerro-Reehil

Jane Ork was known, I am sure, by all of the Western Chapter members. Jane was routinely the first person you would see when attending an event, as she worked at the registration desk greeting members with her bright eyes and a comforting smile.

It was a pleasure to know and work with Jane, she was a strong, quiet leader who made a difference. Jane was vice chair of the Government Affairs Committee and a member of the Western Chapter Board of Directors. Willing to step in and help in any way, Jane was a tremendous asset for NYWEA, helping out behind the scenes in countless ways for the Government Affairs Committee putting together positions and performing research on many issues.

Libby Ford, a fellow member and friend of Jane's, who had the pleasure to serve with her on the Government Affairs committee, came up with the idea to create an award named in her honor.

On September 12, the Board of Directors unanimously approved of the Creation of the Jane Ork Government Affairs Award. Jane Ork (posthumously) will be the first recipient of this award, and it is anticipated that Michael, her husband, and Elizabeth, her daughter, will attend the 80<sup>th</sup> annual Meeting in NYC to accept this award.

Her presence in this world will be greatly missed. However, her spirit lives on in the award created in her name.

## Congratulations Camie McGraw and Jeff Angiel!

Camie has been selected as the new Representative to the State Board for the Young Professionals Committee. As an active member of NYWEA, Camie is co-chair of the local Young Professionals Committee, a member of the state Young Professionals Committee, as well as a member of the GBEC Program and State Program Committees. **Congratulations Camie!**

Jeff has been selected as a member on the NYWEA State Board for a 2-year term expiring Dec. 31, 2009. As an active member of NYWEA since 2000, Jeff is also the chair of the Greater Buffalo Environmental Conference Committee and a member of the state Pretreatment Coordinators Committee. **Congratulations Jeff!**



Camie McGraw



Jeff Angiel

## Young Professionals Wrap-up 2007

By Joe Fiegl, Camie McGraw and John Story

The Western Chapter Young Professionals (YPs) had a busy year. The first event of 2007 was the winter meeting in February, when members met for dinner at Fuddruckers followed by an exciting men's basketball game at the University at Buffalo (UB). The UB Bulls were losing at halftime to Bowling Green by a score of 40-35. They were down the entire second half, but made a valiant last minute run. As the buzzer sounded, the final score read Bowling Green 77, UB 75. Confusion immediately ensued, and UB head coach Reggie Witherspoon was uncharacteristically angered at the referees. Bowling Green left the court, as did most fans, including our group, after several minutes of inaction by the referees and no players on the court. We found out the next day that we should have stayed. Apparently there was still one second left on the game clock when the buzzer sounded, and Bowling Green walked off the court, which was a technical foul on the Bowling Green bench. UB was awarded two free throws and made them both, sending the game into overtime. Overtime was dominated by UB, and they won by a final score of 98-90.

The winter social event was followed by a YP roundtable at the Greater Buffalo Environmental Conference (GBEC). The 2007 topic was "The Future of the Wastewater Industry." The roundtable was comprised of leaders from government, consulting, academia, regulatory, manufacturer's representatives, and an environmental group. Each roundtable participant provided their view on the important issues facing the wastewater industry and what challenges YPs will face in their careers. Various YPs in the audience posed questions to the panel, which led to spirited discussion between the participants. We quickly found that an hour and a half was not nearly enough time to cover all of the topics that everyone wanted to discuss! Special thanks to the panelists for taking their time to be part of this roundtable: John Amend (Malcolm Pirnie), Julie Barrett O'Neill (Buffalo Niagara Riverkeepers), Mark Koester (Koester Associates), Angelo Sarkees (NYSDEC), Scott Weber (University at Buffalo), and Tom Whetham (ECDEP).

In May, the YPs went on a behind-the-scenes tour of several newly constructed life support systems at the Buffalo Zoo. In recent years, the zoo proactively upgraded their treatment systems for the tropical fish aquarium, the Otter Creek and Sea Lion Cove exhibits. The event provided members an opportunity to inspect non-traditional applications for wastewater treatment and recirculation equipment.



In May, the YPs met for a behind-the-scenes tour of several newly constructed life support systems at the Buffalo Zoo.

The Sea Lion Cove exhibit contained perhaps the most impressive of the treatment systems. Of the three systems toured, the sea lions were the only animals which require a salt water environment. Bags of salt, similar to those used in residential water softeners, are poured into the recirculation system to provide the required salinity.

The most unique aspect of the Sea Lion Cove treatment system was the protein skimmer. Sea lions have oily skin, which can easily cloud their water and create a film on the surface. The protein skimmer system utilizes air pumps to create bubbles in the water of the treatment system. The surfaces of the bubbles are created by the oils from the sea lions' skin. As more air is introduced, the bubbles rise through a vertical column and overflow into a sewer, which flows to the Buffalo Sewer Authority collection system.

All three systems are examples of the Zoo's commitment to providing a sustainable environment for its exhibits. NYSERDA funding was obtained for much of the construction, as the new treatment systems operate with significantly less energy than the systems they replaced.

After the Zoo tour, members enjoyed a gathering at Gordon's Bar on Delaware Avenue. Special thanks to Gerry Aquilina at the Buffalo Zoo for taking time out of his schedule to give

the tour and the Western Chapter Board for sponsoring the social event.

Following the success of last year's event, the WNYWEA Young Professionals Committee decided once again to throw a picnic as the Summer Social Event. On September 21, 2007, members, including young professionals, Board members, and others, gathered at the Taylor Road Recreational Facility in Hamburg. The attendees shared hotdogs and hamburgers, as well as a few drinks and good conversation; all for free. Our thanks to the event sponsors (CRA, Malcolm Pirnie, Stearns and Wheler, URS Corporation, and the Western Chapter Board), and to everyone who assisted with the picnic cleanup. The event was a great success, and the Committee hopes to make it a Chapter tradition.

The last Young Professionals gathering of the year was the YPs Fall technical event. In November 2007, Bob Wiltshire from R.M. Headlee gave an informative presentation on the various valve technologies in the municipal water and wastewater industry. R.M. Headlee also brought valve cut-aways to demonstrate how the various valves work. YPs posed questions specific to applications that they have encountered during their work and discussed their valve specifications and how they may be strengthened and/or modified. Afterwards, everyone gathered at Desiderio's Restaurant for a gathering sponsored by R.M. Headlee.

As 2007 winds down, Joe Fiegl's 3-year term as a YP co-chair will be up. Please join us in thanking Joe for all of his hard work and commitment to the committee. Replacing Joe as the YP co-chair will be Dan Milewski from URS. We are already planning exciting activities for 2008, so be on the lookout for YP events coming soon, and join us at the YP session at GBEC 2008. If you would like to get more involved in Young Professional activities, please contact any of the YP co-chairs:

**Joe Fiegl**

fieglj@erie.gov

**Camie McGraw**

cmcgraw@croworld.com

**John Story**

jdstory@stearnswheler.com

**Dan Milewski**

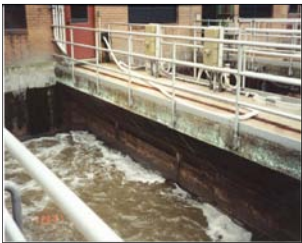
dan\_milewski@urscorp.com



Roberta Gaiek



Patricia Cerro-Reehil



## March 18, 2008 GBEC Morning Agenda

### JOINT SESSION - OPENING REMARKS

- 8:00 a.m.** CONTINENTAL BREAKFAST AND EXHIBITS
- 8:45 a.m.** CONFERENCE OPENING  
Speaker: Roberta Gaiek, P.E., Chair, Western Chapter NYWEA
- 8:50 a.m.** NYWEA UPDATE  
Speaker: Patricia Cerro-Reehil, Executive Director, NYWEA
- 9:00 a.m.** KEYNOTE ADDRESS  
Speaker: Fred Jacobs, Esq., Hodgson Russ – *Doing Business With Government in New York: New Rules of Engagement*

Wastewater Operations	Management & Engineering	Collection Systems & Regulatory Update
Moderator: Wendy Taber	Moderator: Camie McGraw	Moderator: Kirk Rowland
<b>9:30 a.m.</b> <b>Energy Dissipating Inlet Devices</b> Speaker: Jeffrey Schneider, Siemens Water Technologies	<b>9:30 a.m.</b> <b>Eco-System Restoration Engineering</b> Speakers: Alan Rabideau and Joe Atkinson, University at Buffalo	<b>9:30 a.m.</b> <b>WNY Wet Weather Roundtable</b> Speakers: Tonawanda, Buffalo Sewer Authority, Cheektowaga, Olean, NYSDEC
<b>10:00 a.m.</b> <b>Applications &amp; Operations of Hydraulic Control Valves</b> Speaker: Robert Wiltshire, R.M. Headlee Co.	<b>10:30 a.m.</b> BREAK	<b>10:30 a.m.</b> BREAK
<b>10:30 a.m.</b> BREAK	<b>11:00 a.m.</b> <b>Erie County's Regional Sewer Service Merger Program</b> Speaker: Mike Quinn, P.E., Erie County DEP	<b>11:00 a.m.</b> <b>Regional Water Quality Management</b> Speakers: Tyler Gourley, University of Pittsburgh
<b>11:00 a.m.</b> <b>Operation Changes at Big Sister Creek WWTP</b> Speaker: Paul Sawicki, Erie County Sewer District 2	<b>11:30 a.m.</b> <b>Washington Suburban Sanitary Commission Master Planning Plus – Asset Management Planning</b> Speaker: Gage Muckleroy, Stearns and Wheler	<b>11:30 a.m.</b> <b>Draft SPEDES Permit Considerations at the Lackawanna WWTP and Southtowns AWTF</b> Speakers: Tom Whetham, P.E., Erie County DEP
<b>11:30 a.m.</b> <b>BSA Step Feed: Wet Weather Operations</b> Speaker: James Keller Jr., Buffalo Sewer Authority		

**12:00 NOON LUNCH, NYWEA AWARD**

## GBEC Afternoon Agenda

### *Afternoon Breakout Sessions*

Wastewater	Management & Engineering	Pre-treatment
Moderator: Tim Lockhart	Moderator: Paul McGarvey	Moderator: Jeff Angiel
<b>1:15 – 1:45</b>	<b>1:15 p.m.</b>	<b>1:15 p.m.</b>
<b>NYSDEC Topics</b>	<b>Financial Rate Model</b> Speaker: John Mastracchio, Red Oak Consulting	<b>EPA Pre-treatment/Stormwater Update</b> Speaker: Virginia Wong, USEPA
<b>2:15 a.m. BREAK</b>	<b>1:45 p.m.</b>	<b>1:45 p.m.</b>
	<b>Program Management for Municipalities</b> Speakers: Steve McGowan, Malcolm Pirnie	<b>Analytical Testing Methods Update</b> Speaker: John Bourbon, USEPA
<b>2:45 p.m.</b>		
<b>NYSDEC Topics</b>	<b>2:15 a.m. BREAK</b>	<b>2:15 a.m. BREAK</b>
<b>3:15 p.m.</b>	<b>2:45 p.m.</b>	<b>2:45 p.m.</b>
<b>NYSDEC Topics</b>	<b>Nitrifications Design Concerns</b> Speaker: Dan Bentivogli, CRA	<b>Stormwater Coalition Update</b> Speaker: Mary Rossi, ECDEP
	<b>3:15 p.m.</b>	<b>3:15 p.m.</b>
	<b>Cost Saving Nitrification Upgrades at the Jamestown WWTP</b> Speaker: John Story, Stearns and Wheler, LLC	<b>Wheatfield Stormwater Policies</b> Speaker: Jim Cornelius, Wheatfield
	<b>3:45 p.m.</b>	<b>3:45 p.m.</b>
	<b>The Rush Creek Interceptor Project</b> Speaker: Joel Fiegl, ECDEP	<b>BLUE Community – Water, Climate and Great Lakes Conservation</b> Speaker: Julie Barrett O'Neil, Buffalo Niagara Riverkeepers



**YOUNG PROFESSIONALS**  
**2:45 p.m.**  
**Wastewater Facilities with the Operator in Mind**  
  
**Featuring professionals from consulting, regulatory, education, sales, and environmental groups.**

**4:30 p.m. Cocktail Reception**

# Making Buffalo's Inner Harbor Revitalization Work Through Improved Water Quality

By Lori J. Lehnen, P.E. and Christopher P. Martin, P.E. – Conestoga-Rovers & Associates

There is good news for Buffalo! The first part of a comprehensive waterfront revitalization plan is about to become reality – the Erie Canal Harbor Project.

For many years, Buffalo's waterfront has been underutilized, underdeveloped and post-industrial in appearance. Previous development efforts have been spasmodic, endlessly marred by funding difficulties and intramural turf wars by competing government agencies. All of this appears to be changing. Ambitious plans are progressing to redevelop the waterfront with an emphasis on the Erie Canal's history and the original location of the central wharf and commercial slip, which were located at the terminus of the canal.

The waterfront promenade and shore features along the Commercial Slip will enhance integration of water and land-use facilities. When the site opens, visitors will be able to enjoy a maritime museum and naval park, a landing for recreational boats and a trail system to connect nearby parks and adjacent development. Overall, the Erie Canal Harbor Project is providing an attractive and inviting environment, incorporating historic features on the waterfront.

However, a significant roadblock to success is that the terminus of the Erie Canal shares the terminus of the Hamburg Drain, a combined sewer overflow (CSO), owned and operated by the Buffalo Sewer Authority. It's not just any CSO. It is the fourth largest and third most active in the BSA system. A key challenge to making this revitalization project a success in promoting tourism, is the remediation of this CSO.

The Hamburg Drain is a rectangular stone and concrete sewer that is 16-feet wide by 13-feet high. Twenty-one sewer overflow regulators discharge into the Hamburg Drain for conveyance into the lower portion of the Buffalo River, a Class C water body. Approximately 306 million gallons of sewer overflows are conveyed annually, and the 12-month peak flow is about 1,050 cfs.



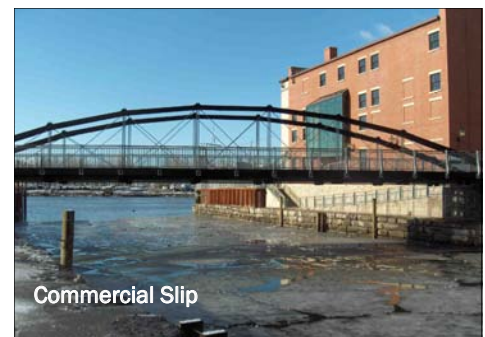
Cascade aeration and flushing system

The Buffalo River is one of 43 Areas of Concern designated by the USEPA. It has a hydraulic regime that is characterized by very low ambient flow, reverse flow due to lake seiche and occasional temperature stratification. Because of its low velocity and lake seiche effects, the Buffalo River retains a high percentage of sediment. The low flow does not allow contaminants to flush from the river, especially during the summer. Dissolved oxygen (DO) levels in the river periodically have fallen to almost 2 mg/L. While problematic, CSOs are not solely responsible for water quality issues on the Buffalo River. It is also a receiving water body from a number of industrial point-source discharges, as well as a significant amount of non-point-source pollutants upstream of Buffalo.

While much of the river's water quality concerns are a result of upstream activities, the Hamburg Drain CSO contributes several pollutants, including floatables, BOD, nitrogen compounds, and fecal coliforms. These pollutants will be discharged to the river via the Commercial Slip. DO levels are also often below the 5 mg/L Class C stream requirement.

The Hamburg Drain is a key component to relieving Buffalo's combined sewer system during wet weather. At the same time, the Commercial Slip is the fulcrum of the redevelopment project. The challenge presented was to develop the best solution to maintain use of the Hamburg Drain, mitigate the impacts from CSO discharges on water quality and maximize land use for public use while fitting within the historical context of redevelopment.

Because the Commercial Slip will be mainly used for waterfront recreation, mitigation solutions focused on addressing aesthetic quality. Water quality modeling indicated that the Commercial Slip would be relatively



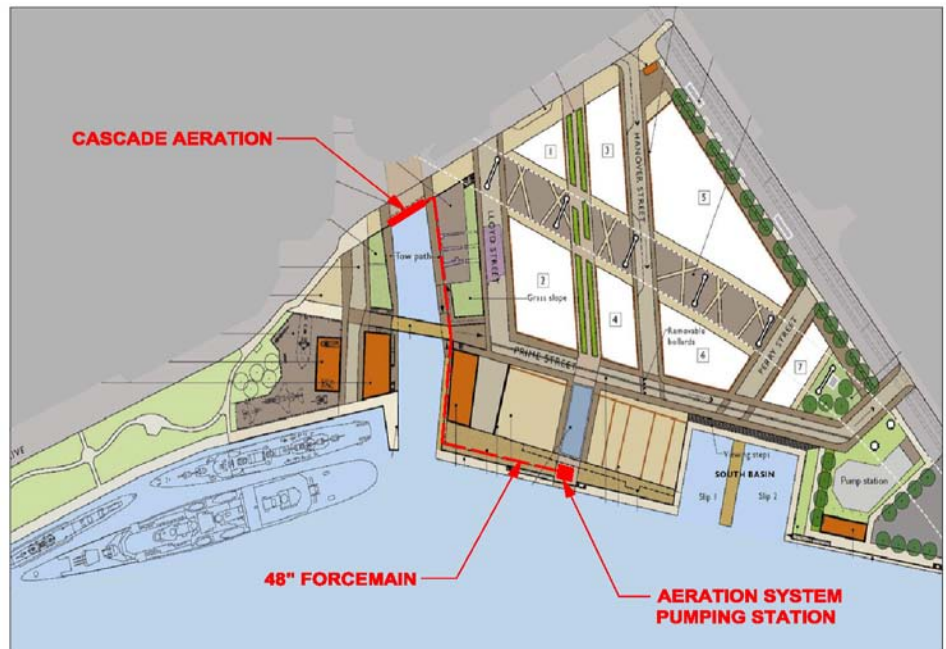
Commercial Slip

stagnant and would have a low assimilative capacity. Therefore, facilities to promote flushing, supplement DO levels and eliminate floatable material were determined necessary to mitigate CSO impacts. The original Preliminary Design Report, conducted in 2003, recommended constructing a small facility near the discharge of the Hamburg Drain to screen and mechanically aerate CSO discharges, and to construct a second facility near the Buffalo River to pump river water to the head of the Commercial Slip for flushing. However, as with most revitalization plans, available capital and prime land were designated for public uses, not infrastructure.

While a flushing system requires little real estate, a floatables treatment facility would consume a significant amount of valuable area and would have a significant cost. Initial concepts were reevaluated and modified to best meet the overall goals of the Erie Canal Harbor Project. A modified approach was agreed to that would address mitigative measures in two phases: 1) flushing and aeration, and 2) off-site floatables treatment. The aeration/flushing facility recently underwent successful startup testing and is expected to be operating in Spring 2008. The floatables facility will be designed once property is secured; this will be the subject of a future article.

Throughout the flushing and aeration system design process, there were numerous limitations and challenges that forced the designers to rethink each component and develop the project in new directions. The completed project involves supplementing flow from the Hamburg Drain with Buffalo River water pumped to the new terminus of the conduit. This system will provide the necessary flow to flush and increase DO levels in the Commercial Slip, as well as mitigate potential odors resulting from CSO discharges and stagnant water. An added aesthetic effect of a waterfall in the slip area also is provided.

A below-grade pumping station was constructed that uses an axial-flow impeller pump drawing from a rotating-screen intake structure built on the Buffalo River bulkhead that is located up-current of the Commercial Slip. The pump has a 17,000-gpm capacity and uses a 100-hp motor driven by a variable frequency drive. The pump assembly, which is submersible, resides within a lift tube. The top of the lift tube is flanged to allow removal of the pump for maintenance. A timer is used to turn



the pumps off overnight when the area is not in use, thus reducing energy costs. Shut-down alarms are also provided in the event of low wet well level, high motor bearing, or winding temperature, or pump seal leakage. A zebra mussel-resistant coating was applied to the pump, lift tube and piping, fittings, and valves within the pumping station. The flushing and aeration system will operate from May to October to coincide with peak use of the area. Once shut down for the season, the influent sluice gate will be closed and the screen removed to protect from ice damage.

Construction of the pumping station had several unique challenges. The existing sub-grade consists of an extensive lattice structure of concrete cribbing, caissons and wood piles that had previously supported a railroad network. The area had been backfilled with rubble and debris, and numerous voids were apparent. Construction in this area was tenuous since damage to the existing caissons and wood piles could have caused collapse of the cribbing beyond the pumping facility. Additionally, due to the proximity of Lake Erie, maintaining a dewatered excavation was key to the successful construction of the wet well.

Pumping station discharge is conveyed to a cascade-type aeration system at head of the Commercial Slip where the Hamburg Drain discharges with a 500-lf, 48-inch diameter forcemain. A pigging chamber was installed to permit removal of zebra mussel buildup

within the forcemain. The aeration structure is approximately 50-feet long and has a vertical face of about 10 feet. River water from the forcemain is discharged into a distribution chamber, where seven adjustable weirs evenly apportion flow across the aeration structure. Also, the structure is designed to raise and lower based on river levels and the presence of ice.

The process design of the cascade aeration and flushing system is based on the Marshall Municipal Utilities cascade aerator (Marshall, MO). Using this system, approximately 1-mgd of flow can have 1 mg/L of DO entrained per foot width over a 2-foot drop in elevation. Based on this process, the Hamburg Drain cascade aerator is designed to supply aerated Buffalo River water with a 6 mg/L DO concentration to the Commercial Slip. This is expected to provide a 5 mg/L DO level within the Commercial Slip nearly 90% of the time.

The next step for addressing CSOs will be design and construction of a floatables screening facility once property is secured. A parcel of property between the Oak and Elm Ramps of the Niagara Thruway is being pursued with the NYS Thruway Authority and CSX Corporation. We hope for construction of this facility to begin in 2008.

In the meantime, plan a visit to the waterfront this upcoming summer and enjoy Buffalo's industrial and cultural history.

## 27th Annual Stockman-Pryce Scholarship Golf Tournament



The 27th annual Stockman-Pryce Scholarship Golf Tournament was once again played at the challenging, Desmond Muirhead designed, River Oaks Golf Club in Grand Island, New York on Monday, September 10, 2007.

This year's tournament was again sponsored by the Western Chapter NYWEA, with the Fuccillo Automotive Group continuing to host hole-in-one prizes at all par threes, including a prize of a new Chevrolet at the 5th hole. Unfortunately, no one was accurate or lucky enough to go home with a new car or any of the other prizes.



The tournament was played in a scramble format with the Clough Harbour foursome of Frank DelSignore, Dory Marsh, Jack McMahon, and Dan Higgins carding the lowest gross score of 60 for the second year in a row. In second place was the Koester foursome of Mark Koester, Tom Whetham, Rick Henry, and John Whitney carding a score of 62.

Other golf events included Men's Longest Drive won for the second year in a row by Frank DelSignore; Ladies' Longest Drive (distance) won by Paula Maedl and Ladies' Longest Drive (time) won by Marie Pryce; and Closest to Pin won by Dan Higgins.



Tom Whetham's skins game, a tournament favorite, yielded skins to Clough Harbour for a birdie on #5 and to Stearns & Wheler for an eagle on #17.

After golf, everyone enjoyed cocktails at the bar, a steak dinner in the dining room followed by awards to the golf contest winners previously mentioned, as well as 50/50 split raffle drawing and door prize give-a-ways. We were honored by the attendance of several members of the Pryce family.



We extend a special thanks to Lisa Smith and Molly Miller-Nagy, who picked up the ball and ran with 50/50 split raffle, which each succeeding year somehow manages to exceed everyone's expectations. This year, \$360.00 was raised and the winner, Joe Fiegl, in a magnanimous jester of charity, donated all of his winnings back to the scholarship proceeds.

Started 26 years ago by a rag-tag group of Don Stockman's friends, the single purpose of the Stockman-Pryce Scholarship Golf Tournament is to raise money for college scholarships awarded to the sons and daughters of those employed in the WNY's Engineering and Construction Community. In the course of that storied history, close to 100 scholarship winners have received more than \$80,000.00. For 2007, \$1,000.00 scholarships were awarded to three recipients: Philip Frandina, Leah Pfitzinger and Timothy O'Brien.

Our tournament would not have endured almost three decades without the efforts of a highly dedicated committee and the financial support offered by our sponsors. Thankfully, many of our sponsors have continued their support year after year.

Our committee, consisting of Paul McGarvey, Kirk Rowland, Tom Whetham, Bryan Smith, Bob Lannon, Tom Ketchum, and Lisa Pryce, works many long hours during the course of a year to plan and execute the tournament and banquet. I would like to thank each of them for their efforts.

Please mark your calendars for Monday, September 8, 2008 when the 28th Stockman-Pryce Scholarship Golf Tournament will be held again at River Oaks Golf Club. Additional details can be found on the next page.

## Golf Tournament Sponsors

We recognize these **sponsors** for their support to make the tournament a success.

Western Chapter WEA  
Conestoga-Rovers and Associates  
Koester Associates

Wm. Schutt & Associates  
URS Corporation  
AFTEK  
DiDonato Associates  
The Buffalo Bills  
Stearns and Wheler

Clough Harbour & Associates  
LiRo Group  
Anderson Equipment  
Milherst Construction  
APWA Western Branch  
Lock City Supply

Custom Topsoil, Inc.  
SJB Services  
ComDoc  
The Floss Agency  
West Herr Automotive Group  
Mallare Enterprises

## 28th Annual Stockman-Pryce Scholarship Golf Tournament

**Monday, September 8, 2008**

River Oaks Golf Club  
 201 Whitehaven Road  
 Grand Island, NY  
 1:00 p.m. Shotgun Start



**PROGRAM**

**11:30 a.m. - 12:30 p.m.**

Registration & Open Driving Range

**11:30 a.m. - 12:45 p.m.**

BBQ Lunch

**1:00 p.m.**

Four Person Scramble Format Shotgun Start

18 Holes With Cart at WNY's Finest Course

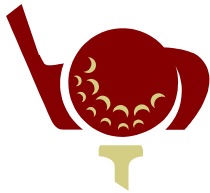
**6:00 p.m.**

Cocktails 3-Hour Open Bar

**6:30 p.m.**

Sit-Down Steak Dinner

Contests, Raffles, Prizes, and Awards



**\$135.00**

Golf, Lunch  
 Cocktails, and Dinner

**\$55.00**

Cocktails and Dinner Only

## 26th Annual Greater Buffalo Environmental Conference

### Registration Form

Name/Title \_\_\_\_\_

Organization \_\_\_\_\_

Address \_\_\_\_\_

City/State/Zip \_\_\_\_\_

Phone \_\_\_\_\_ Fax Number \_\_\_\_\_

I plan to attend :

\_\_\_\_\_ Entire Day

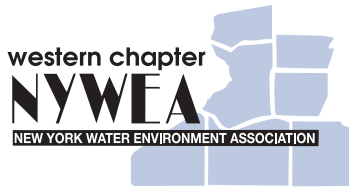
\_\_\_\_\_ Cocktail Reception

Total Fee Enclosed \$ \_\_\_\_\_

Mail to:

Mr. John Camilleri  
 c/o Town of Tonawanda  
 Wastewater Treatment Facilities  
 779 Two Mile Creek Road  
 Tonawanda, NY 14150

Fee Schedule	Pre-Registration (Before March 5, 2008)		At the Door	
	Member	Non-Member	Member	Non-Member
Entire Day at Conference Breaks, Lunches, & Cocktail Reception	\$ 65.00	\$ 75.00	\$ 75.00	\$ 85.00
<b>Note:</b> If planning to attend the reception only, the entire day fee applies.				
<b>PWOD Member - \$45.00</b>				
<b>No charge for Student Members</b> (Includes breaks & lunch)				
<b>Young Professionals are Free</b> (if attending Young Professionals Afternoon Session)				



Western Chapter New York Water Environment Association

January 2008

Molly Miller-Nagy, graphic design & layout  
Conestoga-Rovers and Associates  
285 Delaware Avenue, Suite 500  
Buffalo, NY 14202  
Telephone: 716-856-2142  
E-mail: [mnagy@CRAworld.com](mailto:mnagy@CRAworld.com)

Check out our web site:

[www.wnywea.org](http://www.wnywea.org)

## 2008 Western Chapter NYWEA Meeting Schedule

The Western Chapter program committee is working to develop a more active meeting schedule than in years past. We would like to develop a schedule of dates, topics and locations for the entire year early in 2008 so everyone can reserve the dates on their calendars. We feel strongly that the meetings are great opportunities to network with other professionals in our field, learn about ongoing projects and new technologies, and earn some continuing education credits. And hopefully have a good meal in the process.

Please contact Paul McGarvey via e-mail at [pimcgarvey@stearnswheler.com](mailto:pimcgarvey@stearnswheler.com) if you have any suggestions, topics, or if you are interested in working on the committee to develop the chapter's programs.

**Jan 24:** Joint Dinner Meeting with AWMA NFS — Changes at NYSDEC by Abby Snyder, Regional Director, Protocol Restaurant

**Feb. 4-6:** NYWEA Annual Meeting, New York City

**March 18:** Greater Buffalo Environmental Conference (GBEC), Hearthstone Manor

**April 10:** Buffalo WTP Filter Upgrades Dinner Meeting (Tentative), Chef's (Tentative)

**May 8:** Operator Training Afternoon Meeting, TBD

**June 2-4:** NYWEA Spring Meeting, Lake George

**July 10:** Dinner Meeting, TBD

**August:** Social Event, TBD

**September 11:** Operator Training Afternoon Meeting, TBD

**October 18-22:** WEFTEC, Chicago

## Call for Article Submissions

The Western Chapter of NYWEA invites members to submit articles for consideration. Articles will be published in future Western Chapter newsletters.

This is a great way to get both you and your company published.

More than 200 Western New York consultants, vendors, and clients will read your work. We will consider subjects including:

- Unique or innovative projects

- Announcements of upcoming meetings, activities, and training opportunities
- Updates on chapter committee activities
- Articles on "hot topics" or issues of interest

to our members

Submit your articles to Molly Miller-Nagy, editor at [mnagy@CRAworld.com](mailto:mnagy@CRAworld.com).

All articles are subject to approval by the Western Chapter Board of Directors.

The **New York Water Environment Association, Inc. (NYWEA)** was founded in 1929 by professionals in the field of water quality as a non-profit, educational organization focused on protecting and enhancing our water resources. Members include civil, design, and environmental engineers; biologists, chemists, local and state government officials, treatment plant managers and operators, laboratory technicians, students, professors, lawyers, environmental scientists, equipment manufacturers, and equipment distributors.

NYWEA is a Member Association of the international Water Environment Federation, which is comprised of 64 member associations (19 of which are international), six recognized operator associations, and affiliation with three additional corresponding international organizations. NYWEA consists of seven local chapters representing the various geographic regions across the State: the Capital, Central, Genesee, Long Island, Lower Hudson, Metropolitan, and Western. The Western Chapter covers Erie, Chautauque, Cattaraugus, Niagara, Allegany, Wyoming, and Genesee counties.